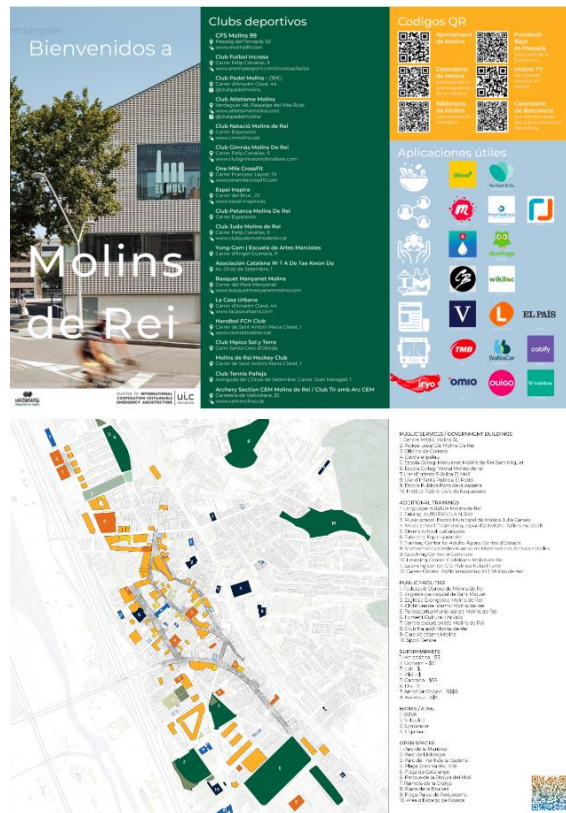


## Collaboration project with the Bayt al-Thaqafa Foundation

In December in 2022, [Master's Degree in International Cooperation: Sustainable Emergency Architecture \(MICSEA\)](#) students participated in a two-week workshop on socio-spatial issues with the Bayt al-Thaqafa Foundation, which helps asylum seekers of all nationalities seeking refugee status and residence in Spain. The Foundation, founded in 1974, currently has two offices in Molins de Rei and Ciutat Vella de Barcelona. The workshop focused on developing socio-spatial maps that reflected the experiences of different refugee women in Molins de Rei and in the Ciutat Vella neighbourhood of Barcelona. Students performed an analysis using a feminist social-urban lens to focus on aspects that are not normally prioritised. Asylum seekers are people waiting for a residence permit in Spain, which is necessary for legal employment. Knowing what they used and what was missing for asylum seekers, students designed two interactive maps (one for each area) highlighting the main points and facilities they could use related to: leisure, facilities, commerce and mobility. The workshop taught the students about emotional vulnerability and the opportunity to travel between Molins de Rei and Barcelona.

## Socio-spatial workshop: “Mapping Asylum Seekers’ Use Of The City Through A Gender Lens” at the Bayt al-Thaqafa Foundation



*Brochure designed by the students of the master's degree for refugees, for Molins de Rei.*